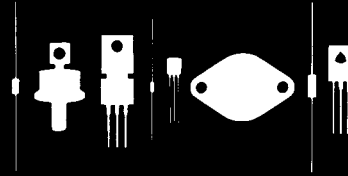


Central
Semiconductor Corp.
Central
Semiconductor Corp.
Central
Semiconductor Corp.
Central™
Semiconductor Corp.

145 Adams Avenue
Hauppauge, New York 11788



C2Z100B THRU C2Z330B

2.0 WATT ZENER DIODE
100 Volts thru 330 Volts

JEDEC DO-41 CASE

DESCRIPTION

The Central Semiconductor C2Z100B Series Silicon Zener Diode is a high quality epoxy molded voltage regulator for use in industrial, commercial, entertainment and computer applications.

ABSOLUTE MAXIMUM RATINGS

Power Dissipation (@ $T_A = 50^\circ\text{C}$)
Operating and Storage Temperature
Tolerance "B Suffix"

SYMBOL

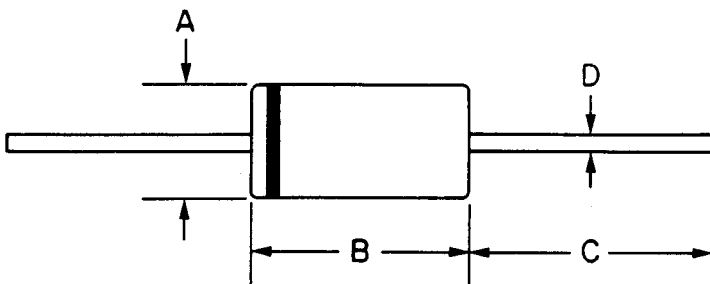
P_D 2.0
 T_J, T_{STG} -65 to $+150^\circ\text{C}$
 ± 5

UNIT

W
 $^\circ\text{C}$
%

ELECTRICAL CHARACTERISTICS ($T_A = 25^\circ\text{C}$), $V_F = 1.2\text{V MAX @ } I_F = 1\text{A}$ FOR ALL TYPES.

TYPE	Zener Voltage	Test Current	Maximum Zener Impedance			Maximum Reverse Current		Maximum DC Current
	$V_Z @ I_{Z1}$	I_{ZT}	$Z_{ZT} @ I_{ZT}$	$Z_{ZK} @ I_{ZK}$		$I_R @ V_R$		I_{ZM}
	Volts	mA	Ω	Ω	mA	μA	Volts	mA
C2Z100B	100	5.0	350	3,000	0.25	5.0	76.0	20.0
C2Z110B	110	4.6	450	4,000	0.25	5.0	83.6	18.2
C2Z120B	120	4.0	550	4,500	0.25	5.0	91.2	16.6
C2Z130B	130	3.8	700	5,000	0.25	5.0	98.8	15.4
C2Z150B	150	3.4	1,000	6,000	0.25	5.0	114.0	13.4
C2Z160B	160	3.2	1,100	6,500	0.25	5.0	121.6	12.6
C2Z180B	180	2.8	1,200	7,000	0.25	5.0	136.8	11.2
C2Z200B	200	2.4	1,500	8,000	0.25	5.0	152.0	10.0
C2Z300B	300	1.7	5,000	9,000	0.25	5.0	240.0	6.6
C2Z330B	330	1.5	5,000	9,000	0.25	5.0	260.0	6.0



EPOXY MOLDED CASE WITH TIN PLATED LEADS

DIM	INCHES		MILLIMETERS	
	MIN	MAX	MIN	MAX
A	.080	.107	2.0	2.7
B	.160	.205	4.1	5.2
C	1.0	—	25.4	—
D	.028	.034	0.71	0.86

145 Adams Avenue, Hauppauge, NY 11788 USA
Tel: (631) 435-1110 • Fax: (631) 435-1824